

KP16/ KE16 INKPRINT

Built for Versatility

The **KP16** and **KE16** are no longer just printing machines. Both can be customized to your specific printing requirements and outfitted for printing on large parts such as appliance panels, hard hats, etc.



▲ KP16 - 5 Color Ø 160mm cups
Shown with optional over/
under linear conveyor, inline
flamer, custom rotating
fixtures and pick-and-place
off-loading device.

- ▶ Both the **KP16** and **KE16** are equipped with a state of the art controller and large LCD touch display.
- ▶ Both the **KP16** and **KE16** can be configured with 1 to 5 colors.
- ▶ Both use sealed inking system for quick color changes and less fumes are released in the environment.
- ▶ Both machines are available with the following options.
 - Hot air on the pads or parts: **HOT WIND 200**
 - Automatic pad cleaning
 - Independently firing pads
 - Pre-treatments: gas flaming or corona
 - UV ink curing
 - Automatic pick and place of the piece for loading/unloading
 - Linear shuttle, elliptical, and rotary table conveyors.

KP16 Electropneumatic driven

- ▶ One to five color configurations
- ▶ High quality printing even on irregular surfaces.
- ▶ LCD displays machine functions with simple menus and error messaging.
- ▶ Modular plug and play software and mechanical combi style allow simple modifications.

KE16 Servo driven

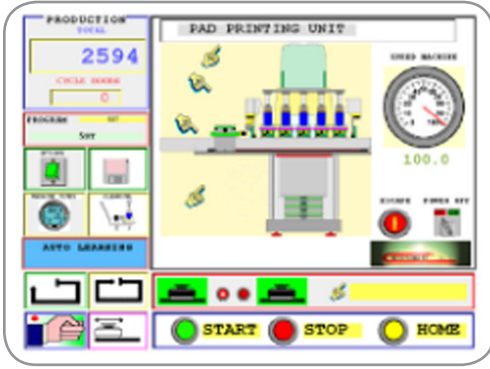
- ▶ One to five color configurations
- ▶ Brushless servo motors with lead nuts and ball screws mounted on bearings, to ensure spot-on printing precision, as well as a 25-30% increase in speed.
- ▶ Flexible electronic control of the horizontal and vertical pads movements translates into easy multi-color registration and image location.
- ▶ **KE16** has a Windows based operating system that drives a completely servo controlled print head and conveyor unit.
- ▶ A 20Gb hard drive allows storage and recall of hundreds of jobs with all print parameters.
- ▶ Available with independently-firing pads and each pad can operate sequentially or in unison.
- ▶ Ask about our unique combi mode system.



▲ KE16 - 5 Color
Shown with optional linear shuttle, hot
wind and independent pads.



KP16/KE16



Adjust all of the movements of the motorized axis directly from the control touch screen, allowing faster setup and changeover of the machine

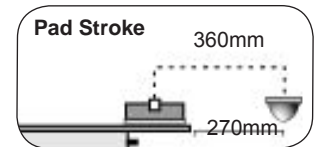
Features

- ▶ Electro-pneumatic or servo-driven models
- ▶ Photopolymer, steel and laser plate capability
- ▶ Custom modifications available
- ▶ One to five color printing options
- ▶ Modular plug and play options
- ▶ Variable cycle delay
- ▶ Foot pedal
- ▶ Independent pad option

Specifications

	XP16 / 1-5 Colors	XE16 / 1-5 Colors
Drive	Electro-pneumatic	Servo-electric
Cliché dimensions	180 x 360mm	180 x 360mm
Closed sealed cup dimension (maximum)	160mm	160mm
Maximum printing area	∅ 145mm	∅ 145mm
Horizontal pad stroke	360mm	360mm <small>3N Brushless motor (axis Y)</small>
Vertical pad stroke	125mm	125mm <small>6N Brushless motor (axis Z)</small>
Maximum printing pressure	7300 N	8000 N
Electrical power supply	380V / 220V	380V / 220V
Pneumatic power supply	6 bar	6 bar
Air consumption	54 litres/cycle	12 litres/cycle
Weight	2645.5 lbs. / 1200 kg	2645.5 lbs / 1200 kg
*Dimensions	HT: 2040mm (80.3") W: 1500mm (59") L: 1560mm (61.41")	

**Machine dimensions will vary depending on optional equipment added. Other standard and custom configurations are available. Machine specifications are subject to change without notice.*



ENGINEERED
PRINTING SOLUTIONS

201 Tennis Way
East Dorset, VT 05253
+1 (802) 362-0844
Toll free: (800) 272-7764
Fax: (802) 362-0858

www.epsvt.com

Email: sales@epsvt.com
or info@epsvt.com

Accessories

- Micrometric cliché support
- Rotary table
- Pad cleaner
- Adjustable pad holder
- Conveyors: Linear or elliptical
- Linear shuttle
- Step-by-Step Feeder
- Feeders: Elliptical or linear
- HOT WIND 200
- Flamers
- Automatic Pick-and-Place
- UV Dryers
- plus more